







TRANSPORTATION ADVISORY COMMITTEE

NOVEMBER 2ND 2020

3:30PM - 5:30PM

CALL TO MEETING & ROLL CALL

AGENDA

1. REVIEW AND VOTE ON MINUTES* 
2. TEN YEAR PLAN 
- BREAK (5 MINUTES)
3. UPDATES
 - NCC Projects
 - Updates From Communities 
4. NH BIKE-PED PLAN
5. REGIONAL TRANSPORTATION PLAN
6. FINAL THOUGHTS/COMMENTS 
7. ADJOURN

REVIEW & VOTE ON MINUTES

TEN YEAR PLAN

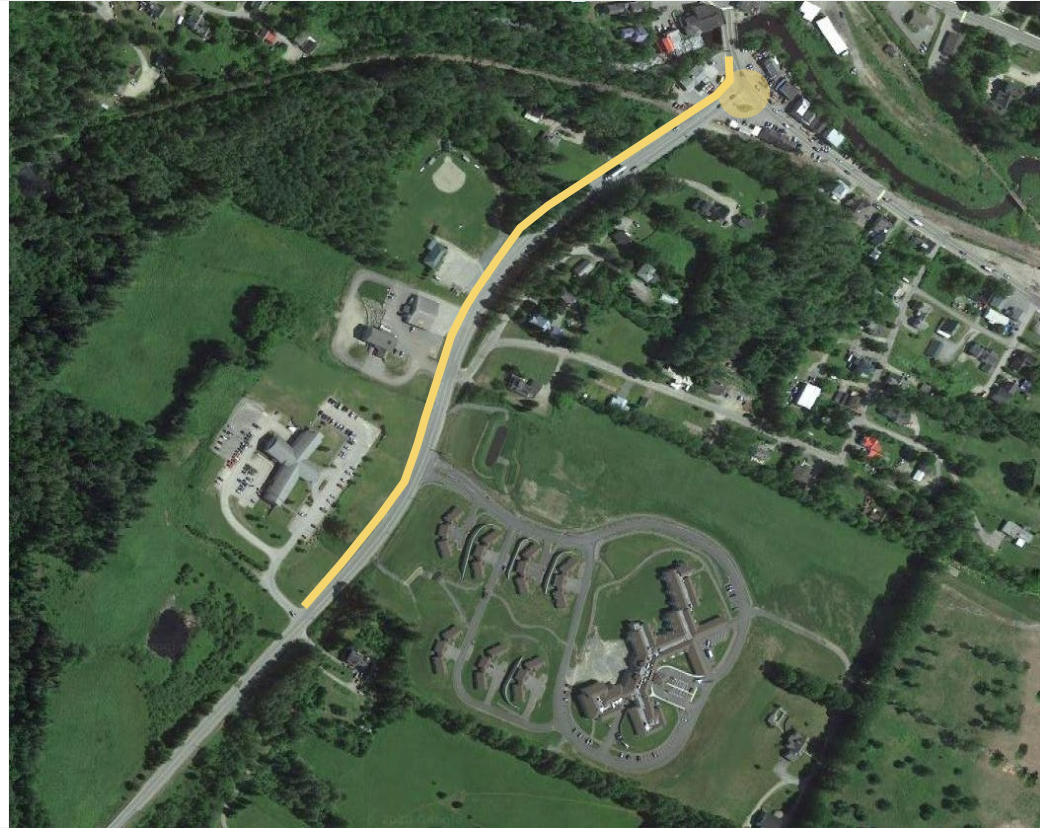
- **Six proposals received, four eligible**
- **HEB cost estimates and scoping**
» coordination with NHDOT
- **Scoring of projects**
- **Submit to NHDOT**



TEN YEAR PLAN

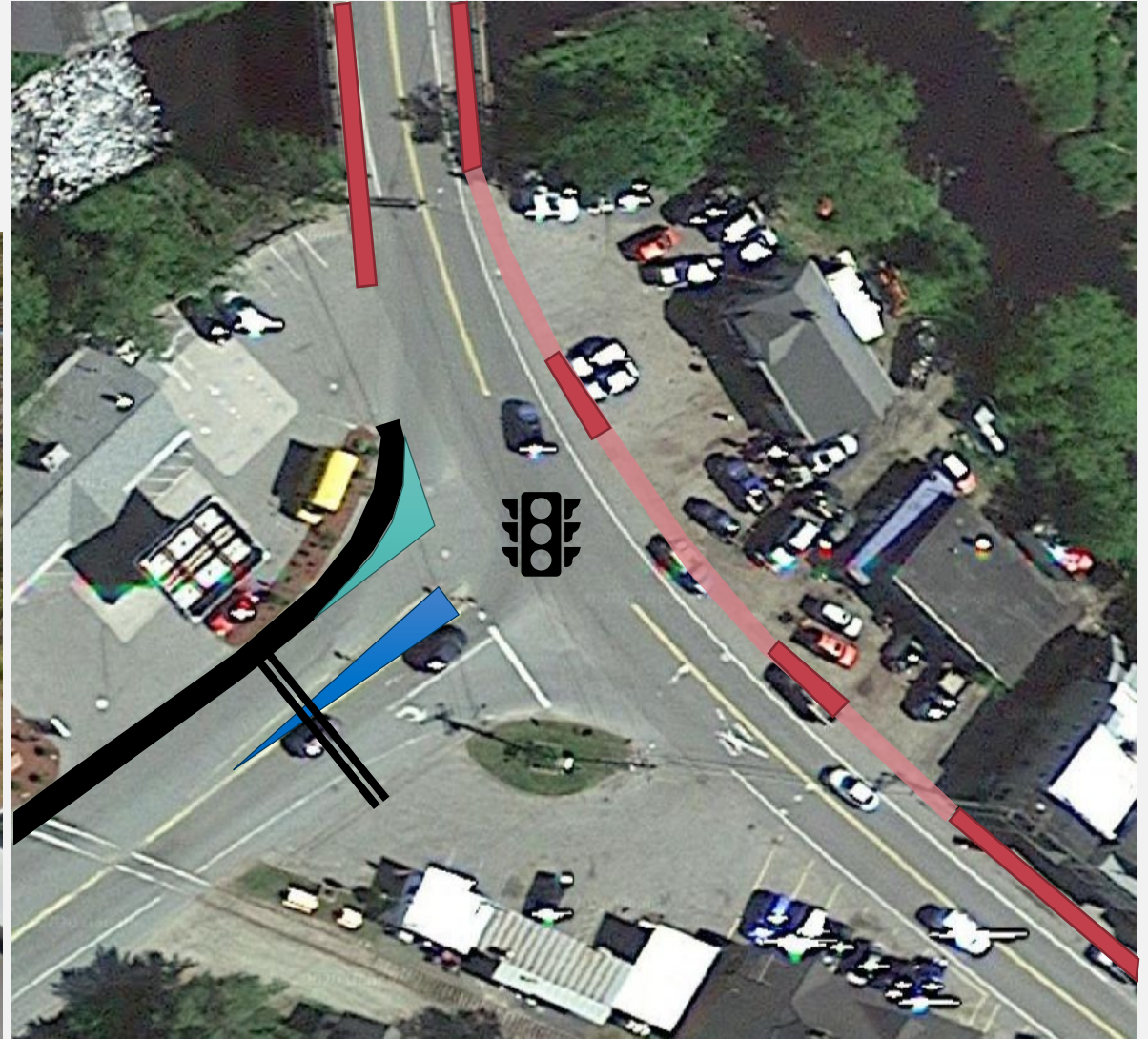
Whitefield NH116

construction of approx. 2000' of sidewalk, crossing improvements, and intersection improvements on NH116



TEN YEAR PLAN

Whitefield NH116



DISCLAIMER: for conceptual planning purposes only

TEN YEAR PLAN

Whitefield NH116



Reduced turning radii



Crossing with median

TEN YEAR PLAN

Whitefield NH116

Project Strengths:

- Improves safety of pedestrians
- Improves mobility of pedestrians and drivers
- Increases accessibility
- Addresses equity & environmental justice
- Important facility; increasing traffic volume
- Supported in Master Plan and locally

Cost: \$1,000,000

Weighted Criteria Score:



TEN YEAR PLAN

Gorham US2

Gorham US2

replace 16,420' of sidewalk to be ADA accessible and Complete Streets upgrades to include traffic-calming, seasonal infrastructure, and separated bike lanes where possible



TEN YEAR PLAN

Gorham US2



TEN YEAR PLAN

Gorham US2



Sidewalk improvements and separated bike lanes

TEN YEAR PLAN

Gorham US2

Project Strengths:

- Improves safety of cyclists
- Improves mobility of pedestrians and cyclists
- Improves state of repair (sidewalks)
- Addresses equity & environmental justice
- Important facility; steady traffic volume
- Supported in Master Plan and locally

Cost: \$1,700,000

Weighted Criteria Score:



TEN YEAR PLAN

Berlin NH16

Berlin NH16

reconstruction of approximately 4,300' of road and sidewalk, upgrade sidewalks to ADA compliance, and addressing aged drainage systems



TEN YEAR PLAN

Berlin NH16



TEN YEAR PLAN

Berlin NH16



Sidewalk improvements and road reconstruction

TEN YEAR PLAN

Berlin NH16

Project Strengths:

- Improves mobility of pedestrians
- Improves state of repair (road & sidewalks)
- Addresses equity & environmental justice
- Important facility; steady traffic volume
- Seeks to address drainage systems
- Supported in multiple plans and locally

Cost: \$3,400,000

Weighted Criteria Score:



TEN YEAR PLAN

Littleton US302

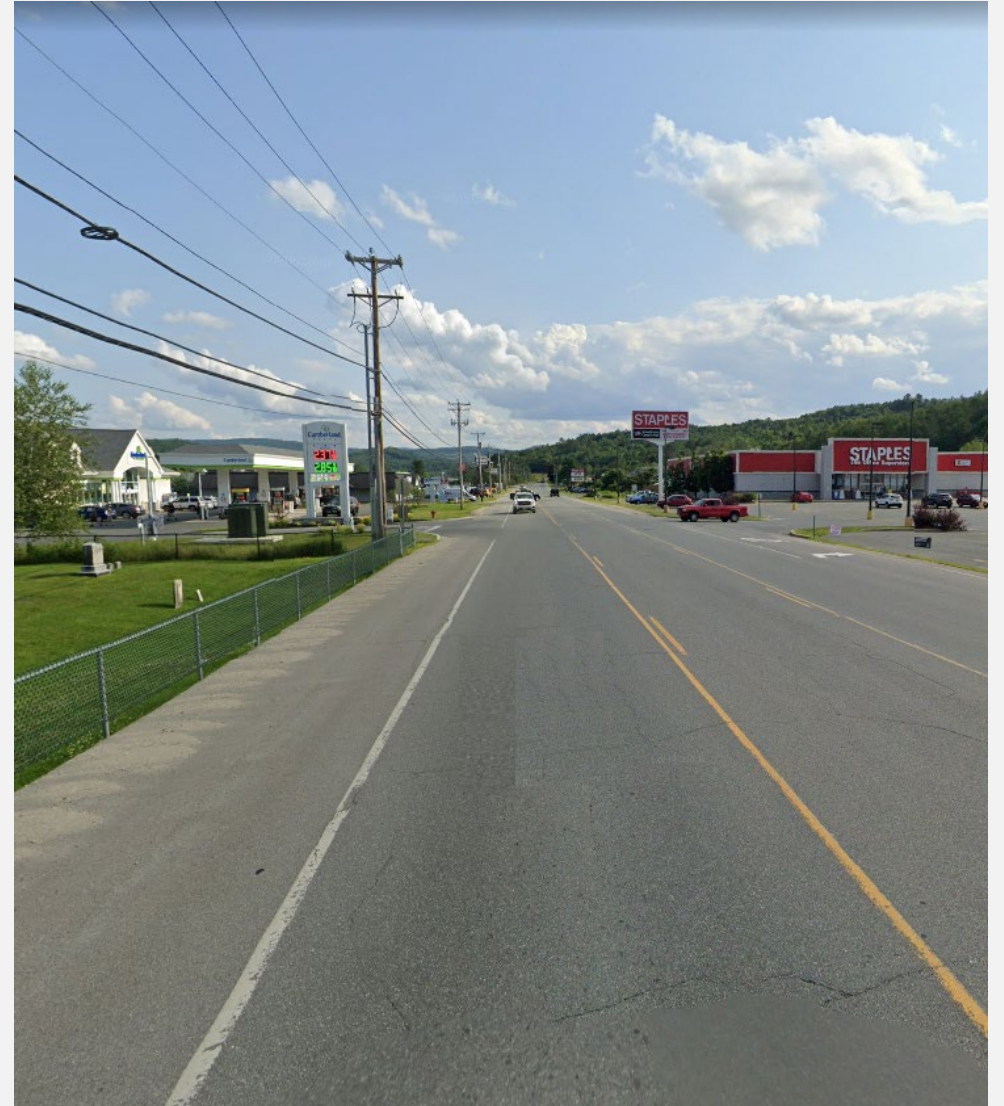
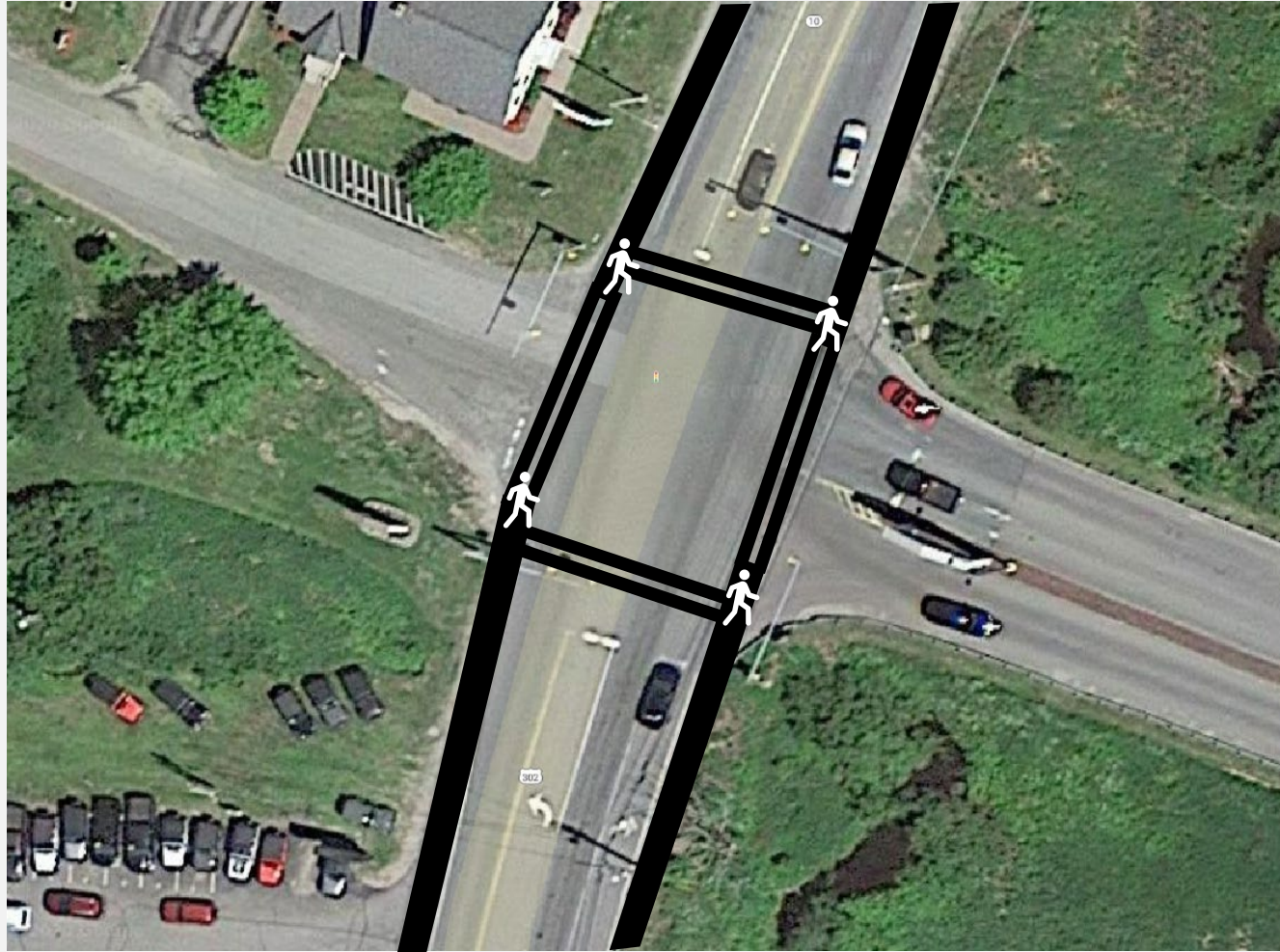
Littleton US302

construction of approx. 9,600' of sidewalk and new pedestrian controlled crossings at the Walmart traffic signal



TEN YEAR PLAN

Littleton US302



DISCLAIMER: for conceptual planning purposes only

TEN YEAR PLAN

Littleton US302



Controlled pedestrian crossing



New sidewalks

TEN YEAR PLAN

Littleton US302

Project Strengths:

- Improves safety of pedestrians
- Improves accessibility of pedestrians
- Addresses equity & environmental justice
- Important facility; steady traffic volume
- Project area is in good state of repair
- Supported in Master Plan and locally

Cost: \$3,900,000

Weighted Criteria Score:



TEN YEAR PLAN

Total Regional Allocation: \$6,100,000

Whitefield NH116

Cost:

\$1,000,000

4.69

Berlin NH16

Cost:

\$3,400,000

4.58

Gorham US2

Cost:

\$1,700,000

5.19

Littleton US302

Cost:

\$3,900,000

4.51

BREAK (5 MINUTES)



REGULAR UPDATES

NCC PROJECTS

- **Gorham Parking Study**
 - » Purpose of study
 - » Progress + remaining work
- **Hart's Location Culvert Assessments**
 - » Purpose of study
 - » Progress + remaining work



REGULAR UPDATES

NCC PROJECTS

- **Bike Racks**
 - » Map existing and desired locations
 - » Create guidance on installation
 - » Coordinate with local vocational programs and artisans to make new bike racks



REGULAR UPDATES

ROAD SAFETY AUDITS 2021

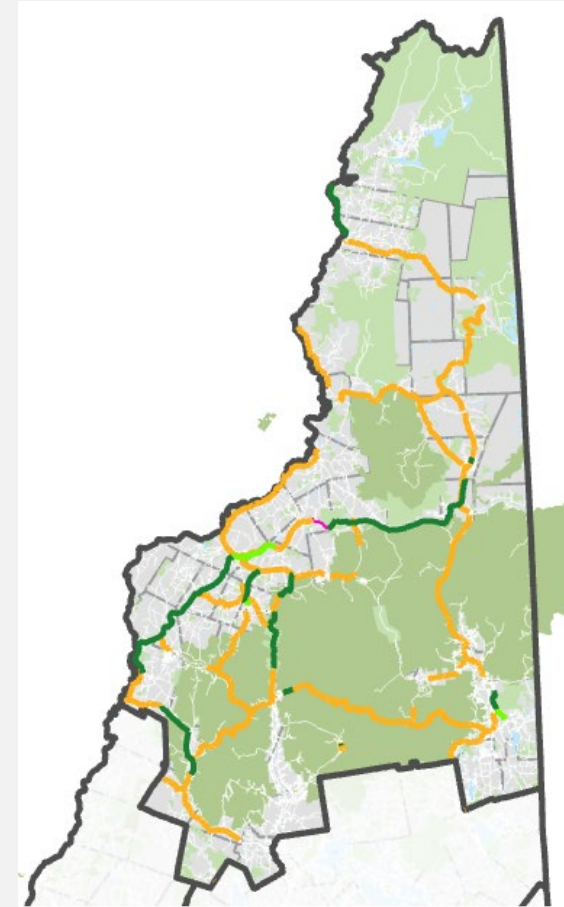
- Applications due by December 1st 2020

UPDATES FROM COMMUNITIES

- Updates, questions, comments

NH BIKE-PED PLAN

- **New completion timeline of end of 2021**
- **Review drafted network & edit**
- **Identify priority projects**
 - » **10 major**
 - » **10 minor**



NH BIKE-PED PLAN

- **10 Major**

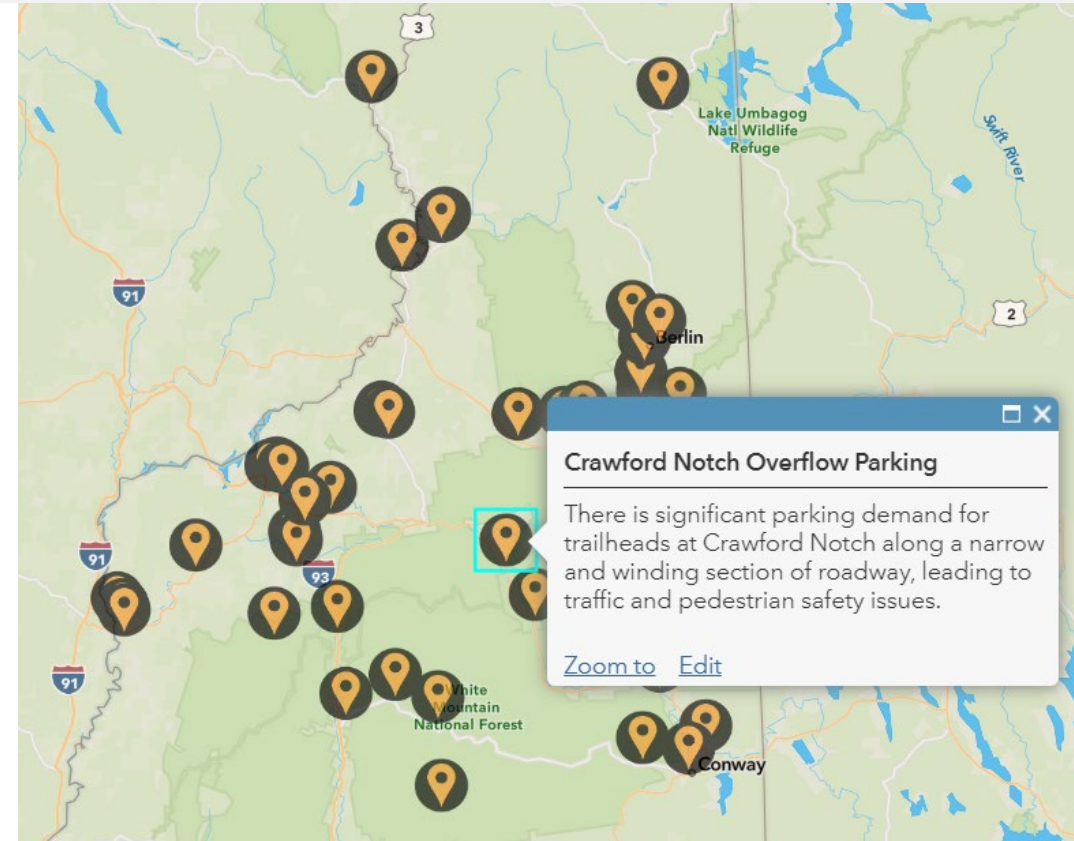
- » **Littleton Meadow Street / US302**
- » **Gorham Main Street / NH16**
- » **NH116 from Littleton to Whitefield**
- » **NH112 North Woodstock to Loon Mountain**
- » **Waterville Valley**
- » **US2 from Lancaster to Jefferson**
- » **Berlin NH16**
- »
- »

- **10 Minor**

- » **Conway NH16/113 from NH112 White Mt. Hwy**
- » **Colebrook US3 from elementary school to IGA**
- » **NH115A from Jefferson to NH115**
- »
- »

REGIONAL TRANSPORTATION PLAN

- **Flyers to town offices**
- **Survey still open, looking for ideas to increase participation**
- **Continuing to work on draft**



FINAL THOUGHTS/COMMENTS

